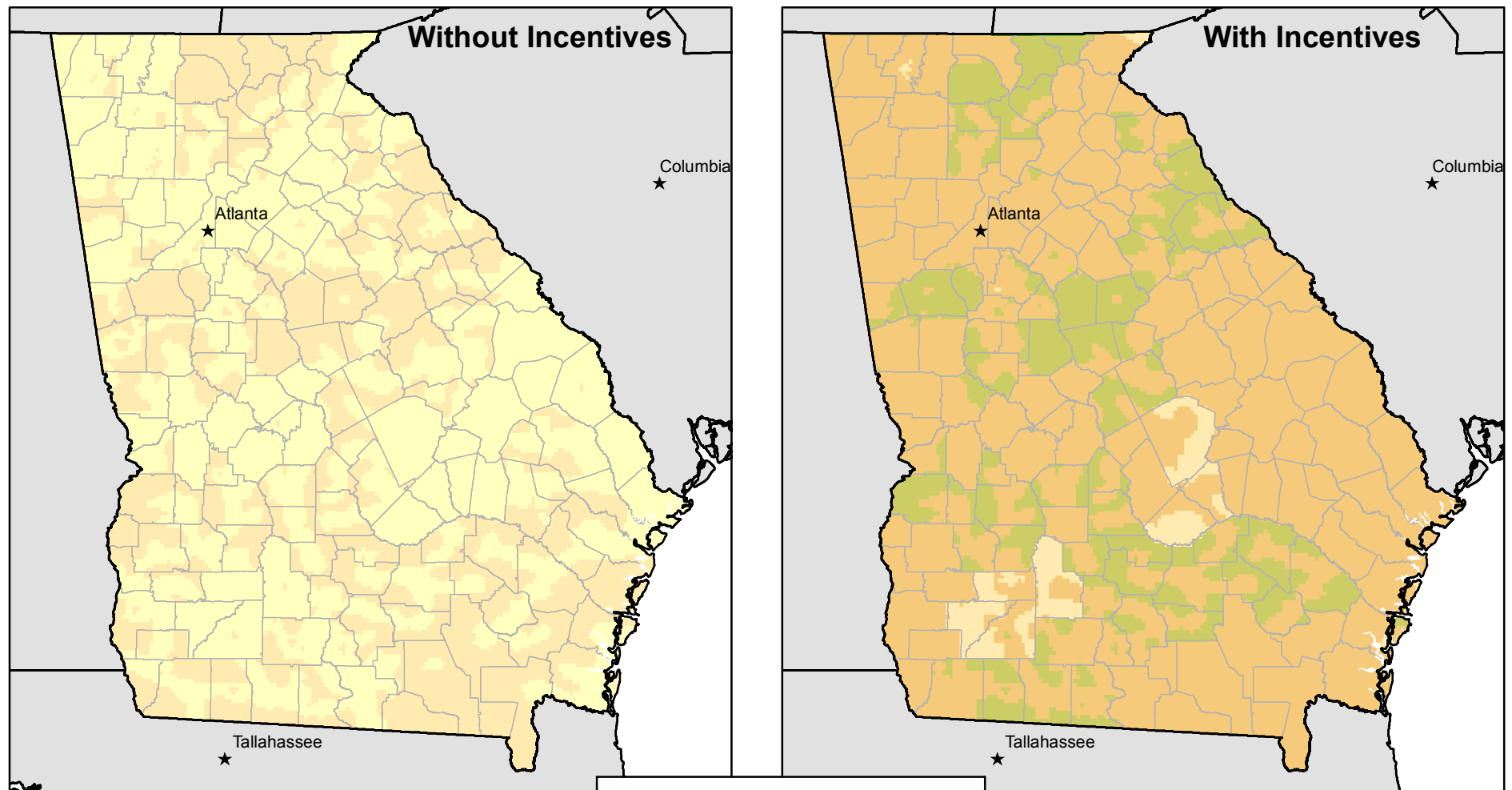
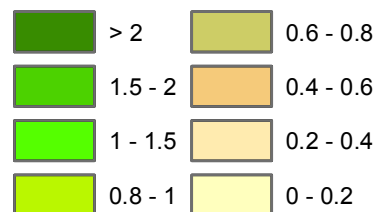


Georgia - Simple Savings-to-Investment Ratio for Photovoltaic Systems (Commercial - 1 MW size)



Incentives used reflect entries from May 2009 in the [dsireusa.org](http://www.dsireusa.org) database, categorized to apply them within a national framework. This map is intended to indicate potential savings from incentives; to identify whether a specific application would qualify, please visit <http://www.dsireusa.org> to see details for each incentive.

Savings-to-Investment Ratio



Incentives examined:
 Business Energy Tax Credit (Federal)
 Renewable Energy Production Incentive (Federal)
 Residential Solar and Fuel Cell Tax Credit (Federal)
 USDA Rural Energy for America Program (Federal)
 Clean Energy Tax Credit - Corporate (State)
 TVA - Green Power Switch Generation Partners Program (Utility)